



# Maternal Health: Rajasthan

State Institute of Health & Family Welfare,  
Jaipur

# State Profile

- Demographical
  - Pop. 68,621,012
    - Male : 35,620,086
    - Female: 33,000,926
- Literacy Rate (%): 67.06
  - Male: 80.51
  - Female: 52.66
  - Age at Marriage: 20.7(Boys) &17.7(Girls)
  - Sex Ratio: 926 (Females per 1000 males)
    - Child Sex Ratio(Age 0-6 yr): 883

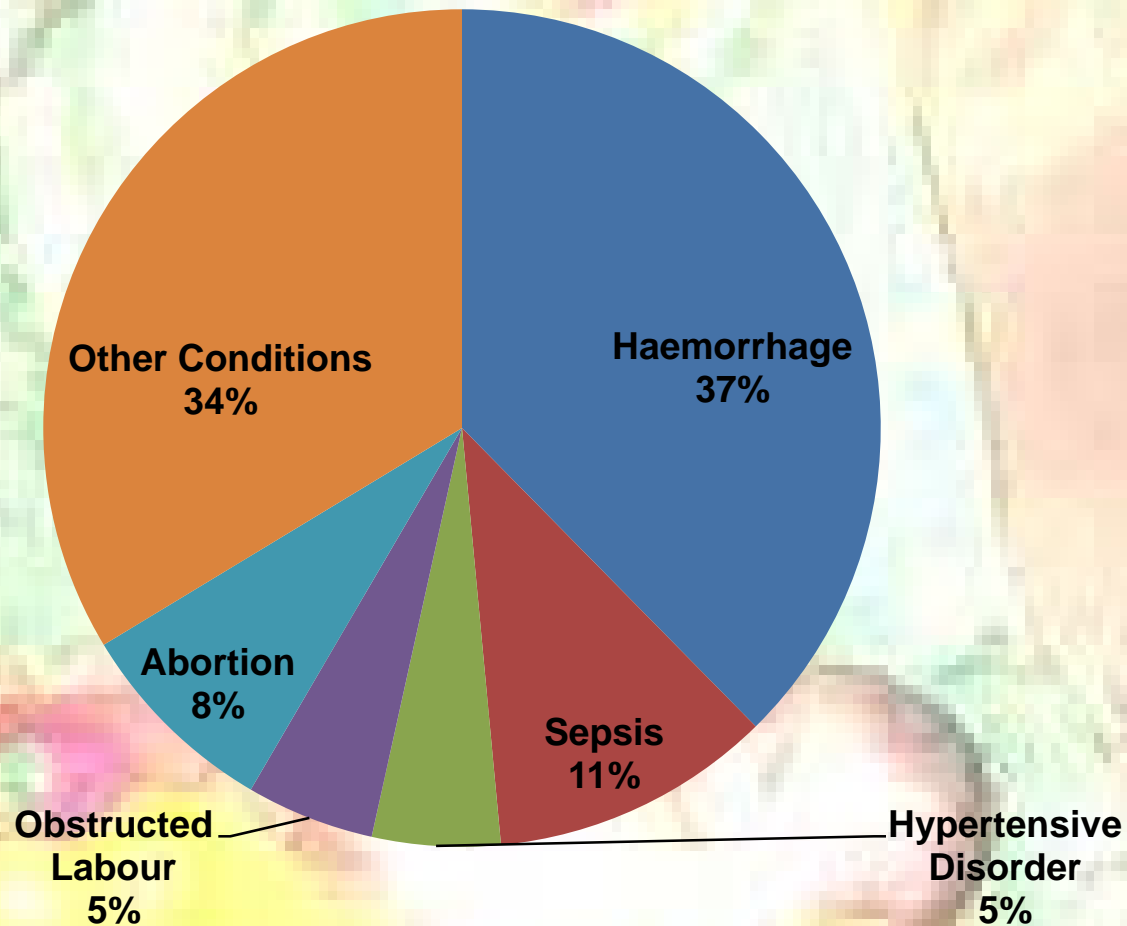
Source: Census 2011

# Status Maternal Health –Rajasthan



| Indicators              | Achievements (11-12) | April to June (12-13) | Achievement       |
|-------------------------|----------------------|-----------------------|-------------------|
| ANC registration        | 100.78%<br>(1852221) | 495349                | (5.4% Increase)   |
| Early ANC registration  | 46.96 % (863131)     | 236136                | (6.85% Increase)  |
| Full ANC                | 72.99% (1341543)     | 324182                | (13.31% Increase) |
| Institutional delivery  | 77.34% (1279362)     | 266649                | (4.6% increase)   |
| JSY beneficiaries       | 1010210              | 215067                | -                 |
| JSSY beneficiaries      | 430235               | 164461                | -                 |
| Functional FRU          | 98                   | -                     | -                 |
| Maternal death reported | 780                  | 180                   | -                 |
| Maternal death audit    | 639                  | 110                   | -                 |

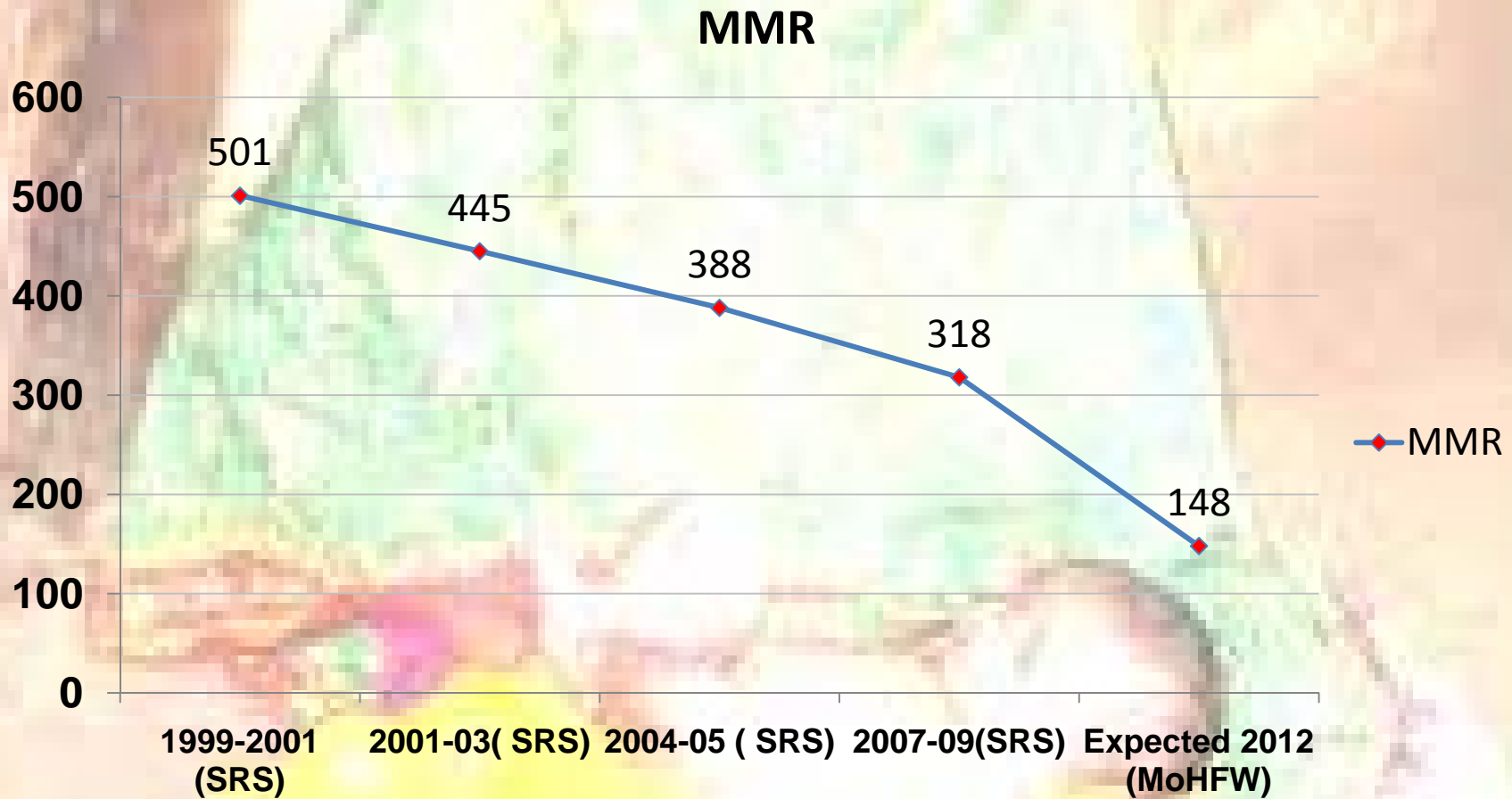
# Causes of Maternal Mortality



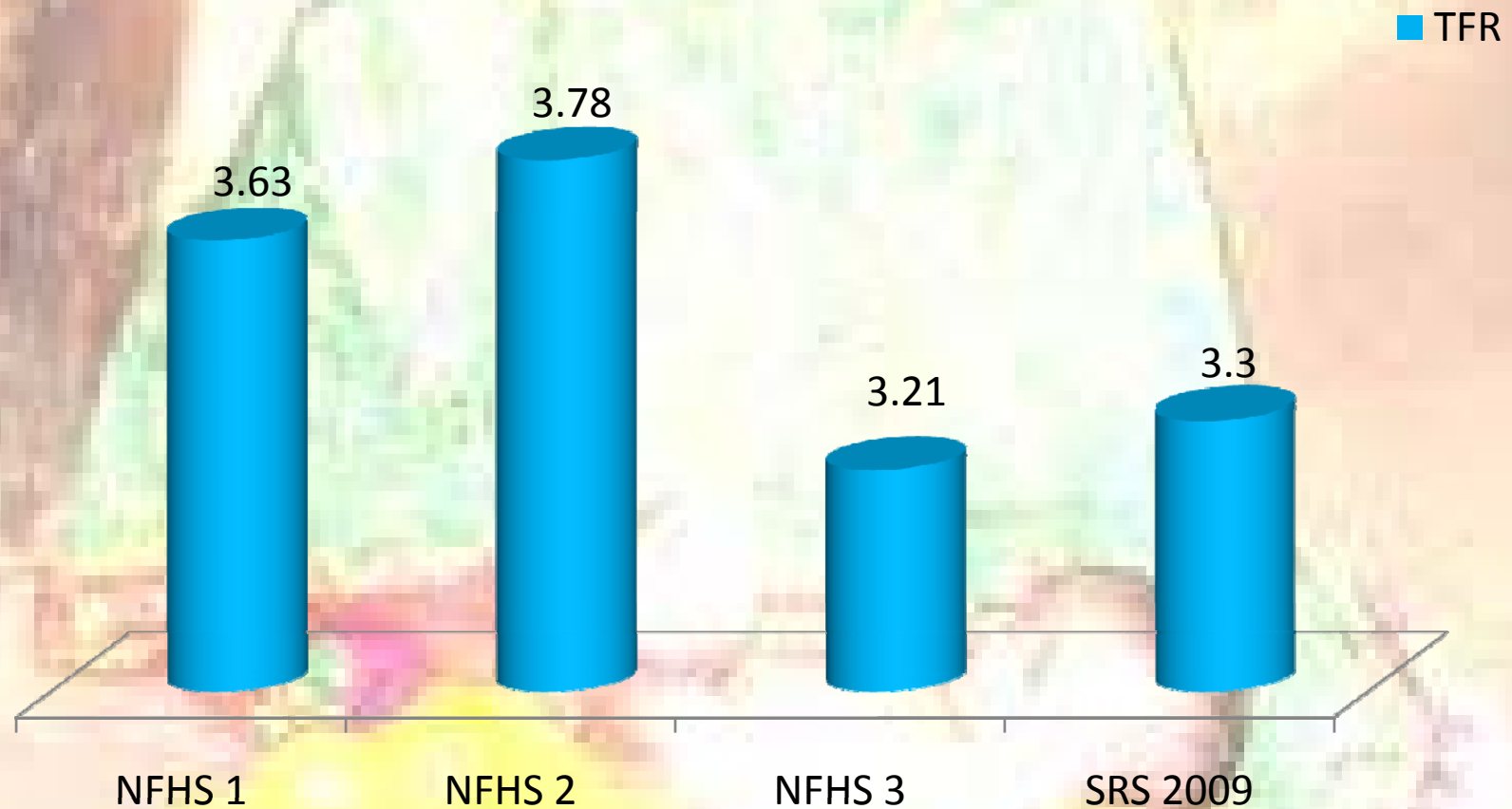
Source-SRS ,MATERNAL MORTALITY IN INDIA: 1997-2003

SIHFW: an ISO 9001: 2008 certified institution

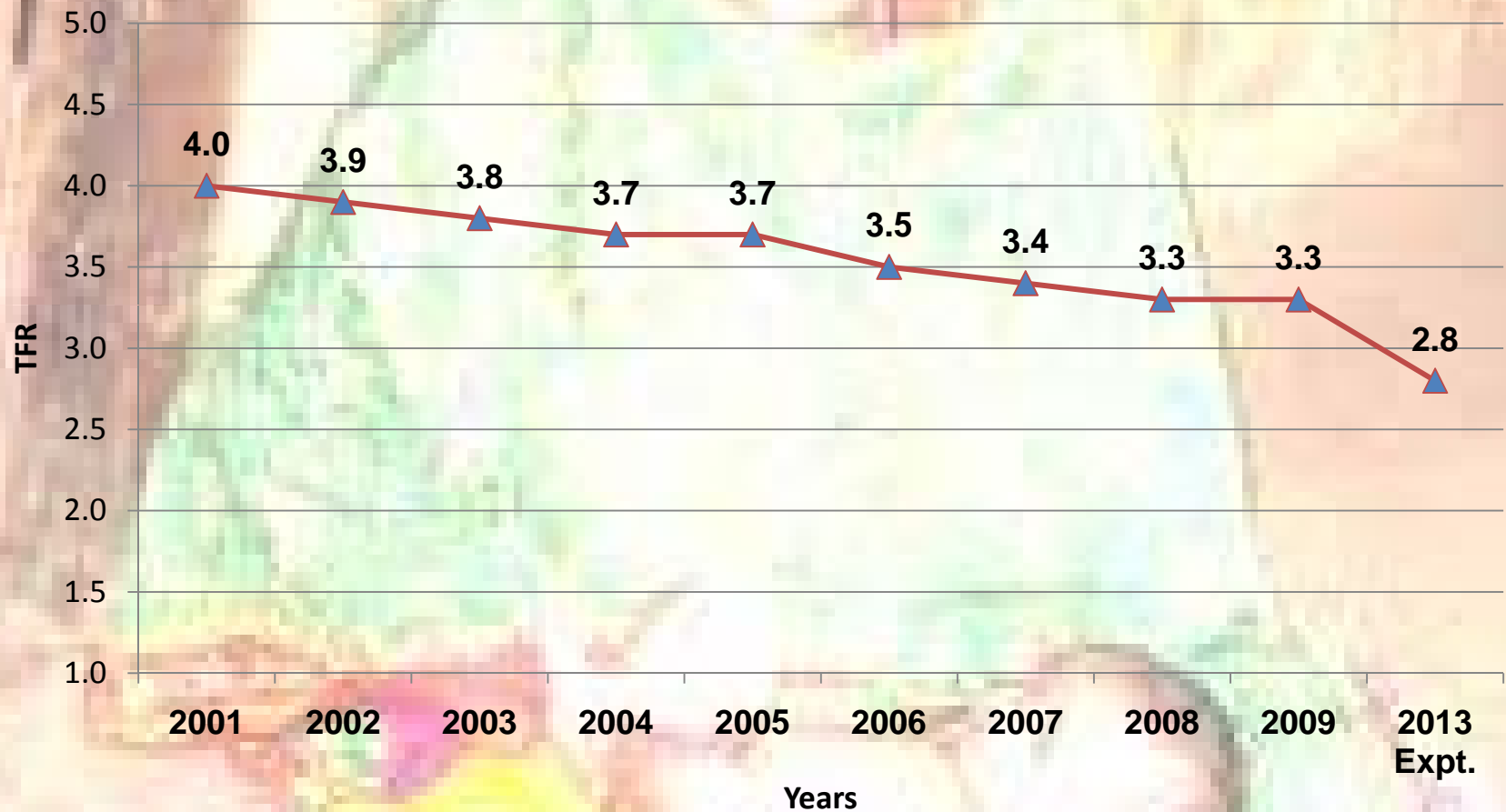
# Trends in Maternal Mortality Ratio (Rajasthan)



# Total Fertility Rate (Rajasthan)

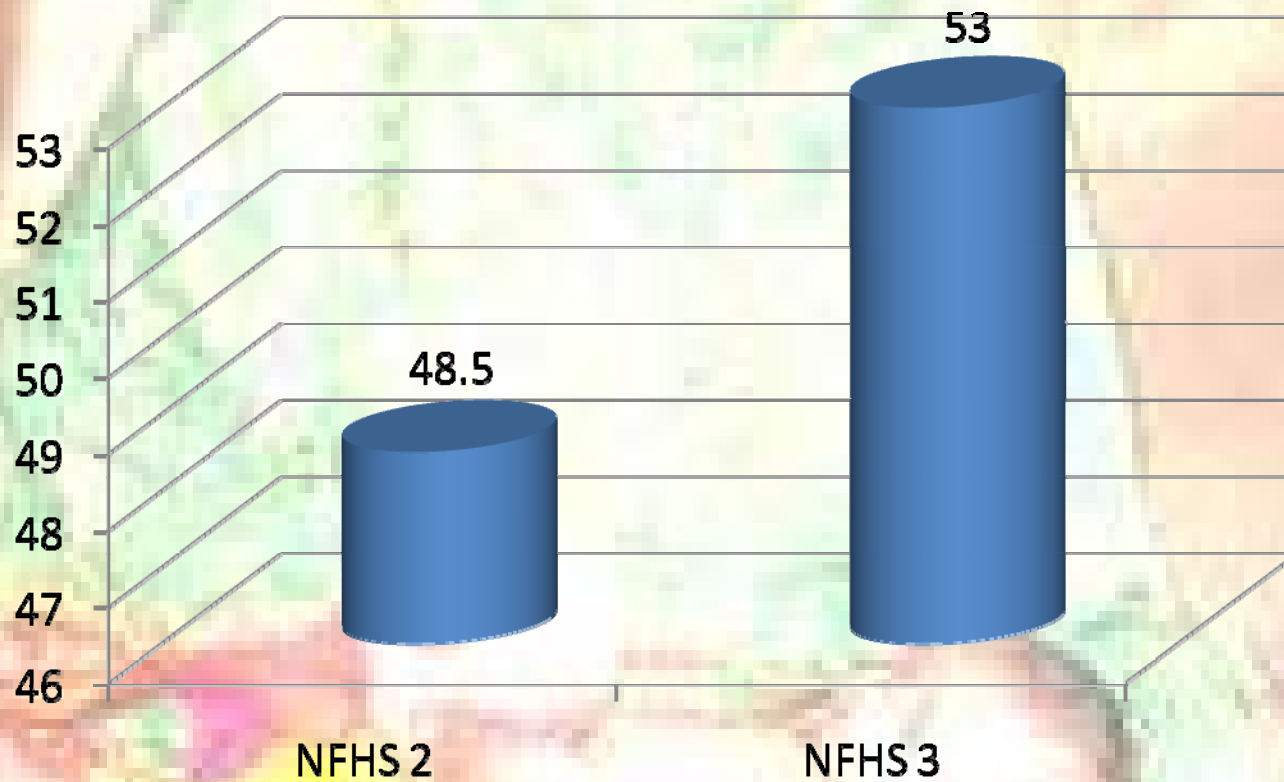


# Trends of TFR–Rajasthan



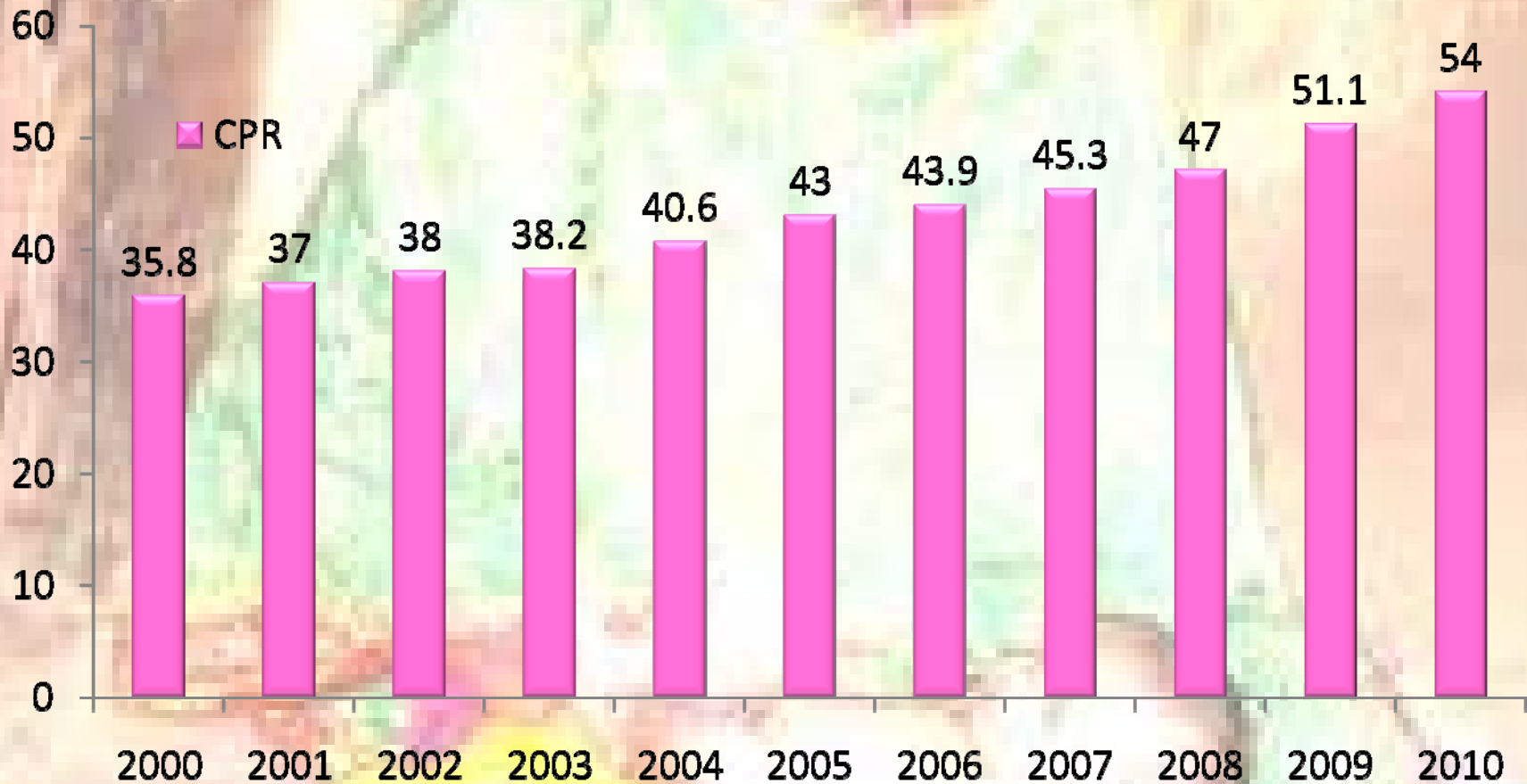
Source: Fifth Common Review Mission,  
9th November 2011

# Prevalence of Anemia in Rajasthan (NFHS)





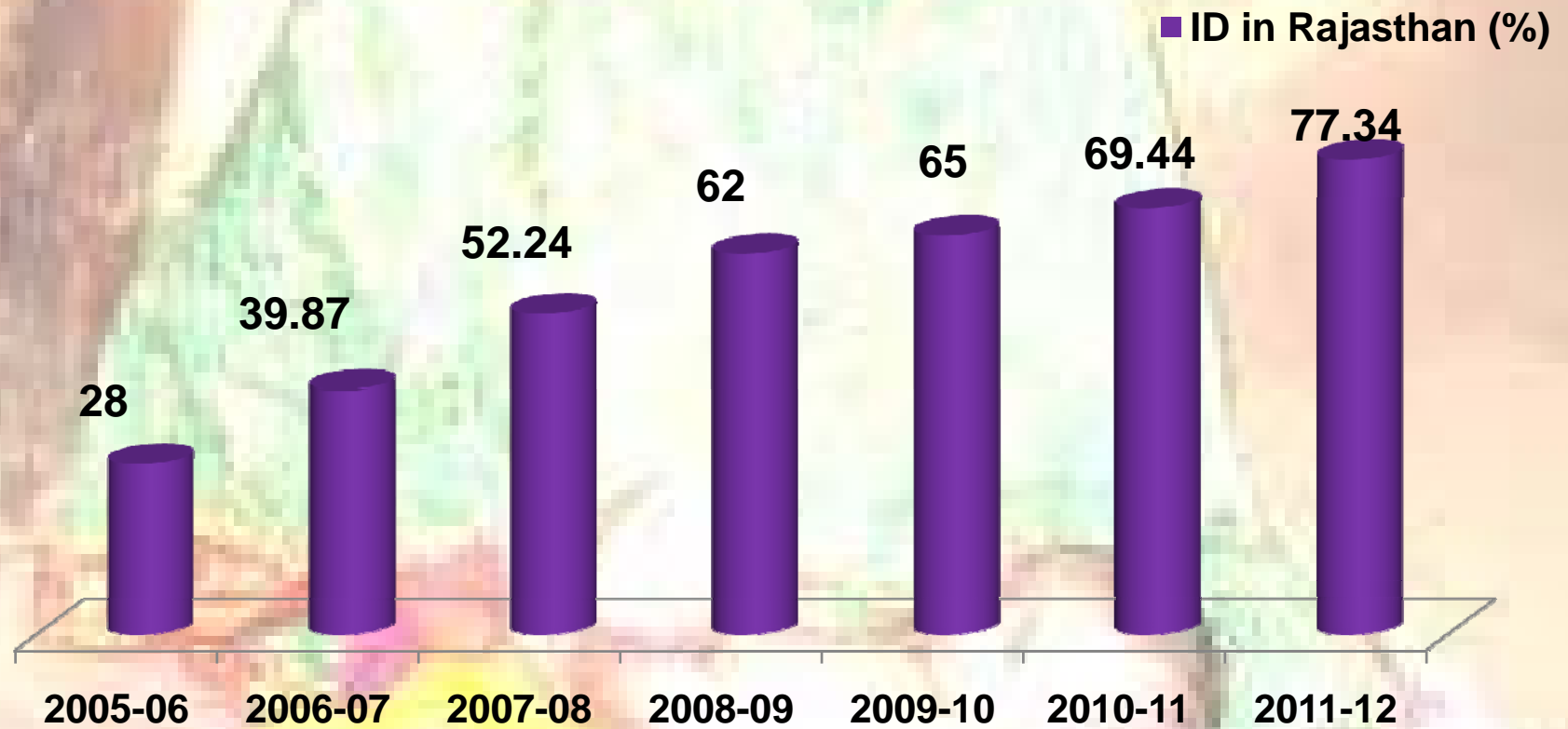
# Contraceptive Prevalence Rate in Rajasthan



Source: Pragati Prativadan



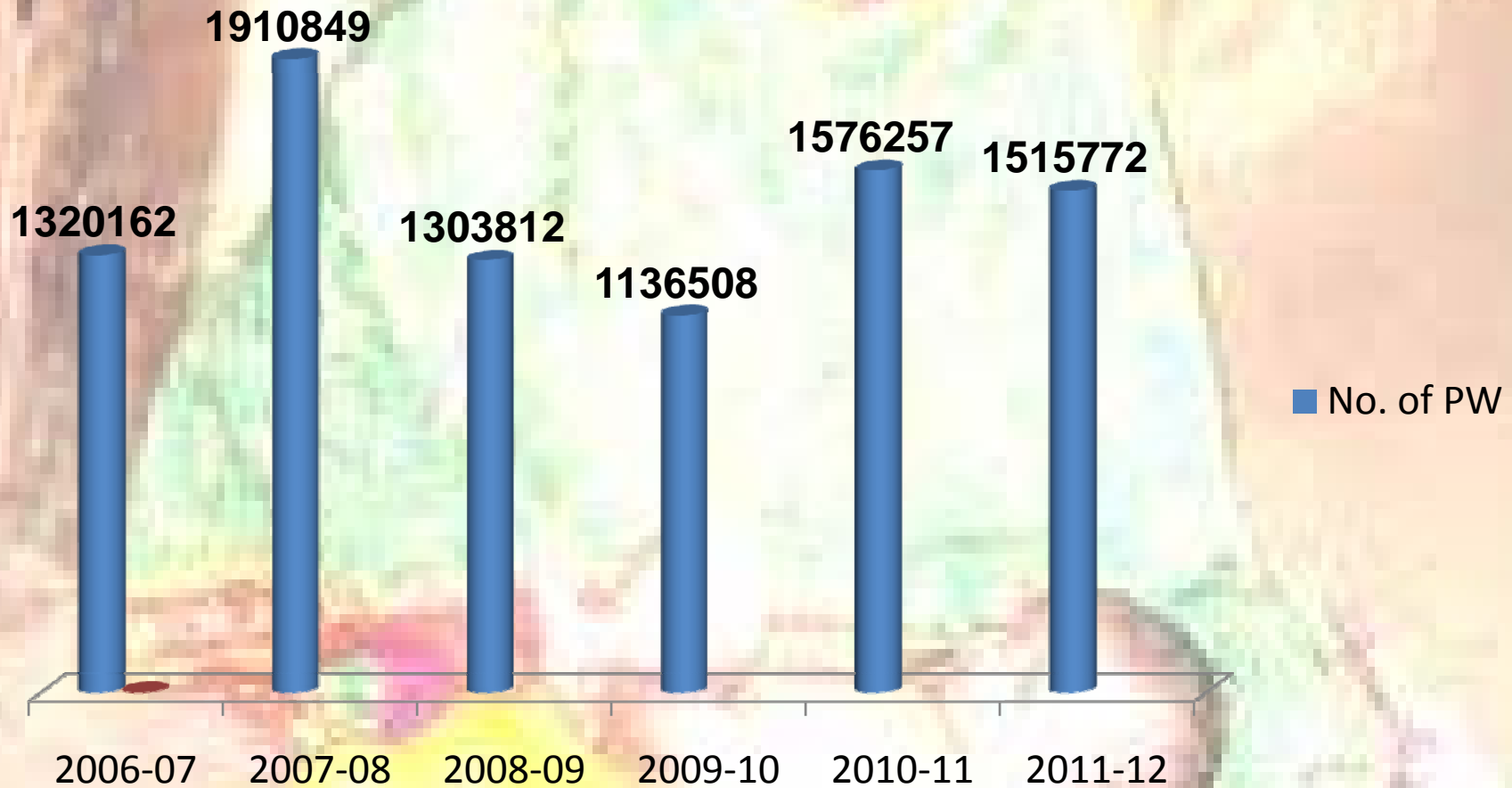
# Institution Delivery



Source: [www.rajswasthya.nic.in](http://www.rajswasthya.nic.in)



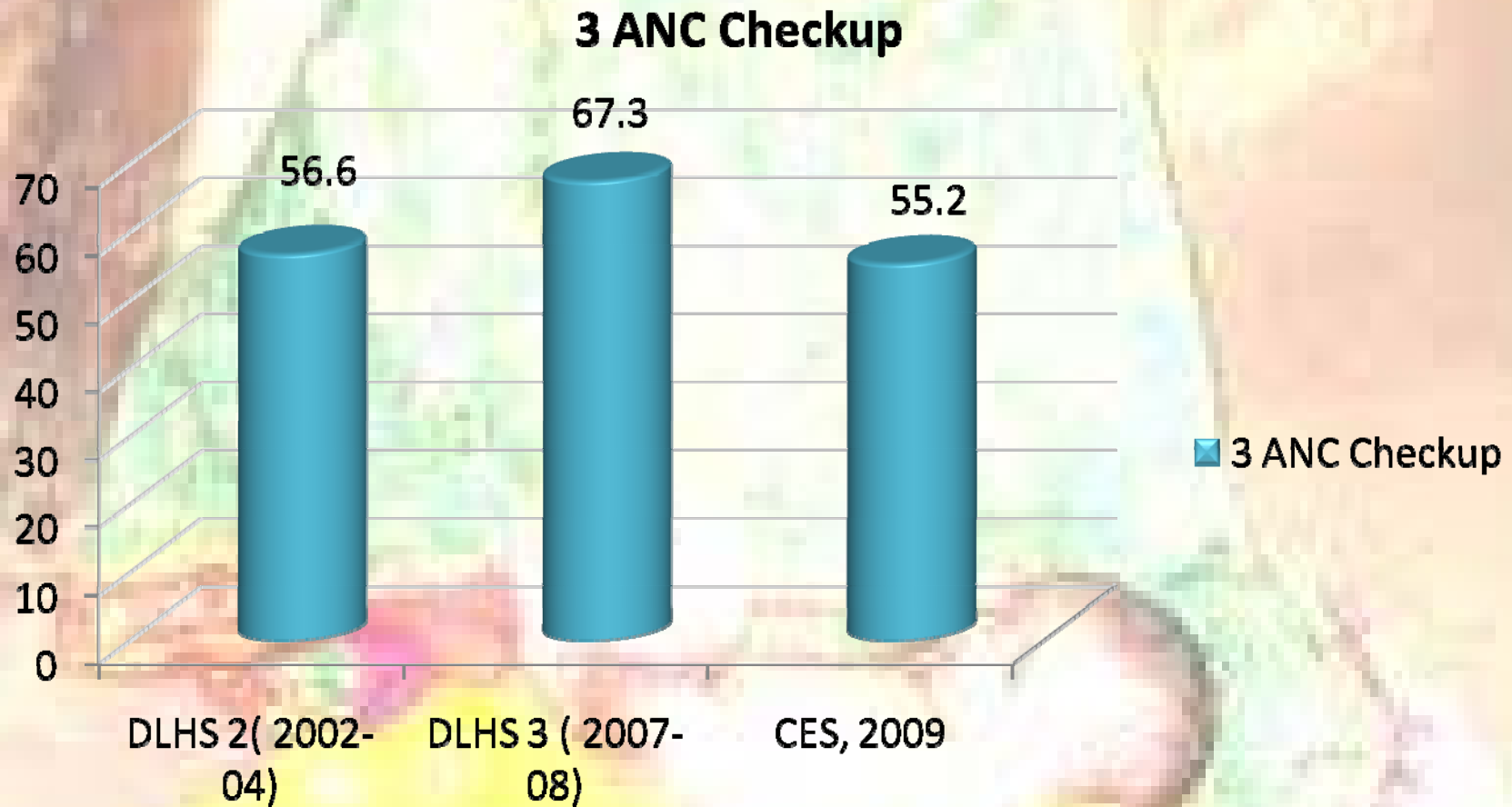
# PW receiving 2 TT injections: Rajasthan



Source: [www.rajswasthya.nic.in](http://www.rajswasthya.nic.in)



# Status of 3 ANC checkups (Rajasthan)





# Maternal Health Interventions in State

- Rajasthan Janani Shishu Suraksha Yojana (RJSSY)
- Provision of Emergency Obstetric Care
- Provision of Skilled Birth Attendant
- Provision of Safe Abortion Services
- Provision of RTI/STI services in collaboration with RSACS upto PHC level
- Promotion of Evidence Based Practices
- Organizing MCHN Days
- Maternal Death Audit

# Rajasthan Janani Shishu Suraksha Yojana



## Entitlements for Pregnant Women

- Free delivery
- Free caesarian section
- Free drugs & consumables
- Free diagnostics (Blood, Urine tests & USG etc.)
- Free diet during stay (up to 3days for normal delivery & 7 days for C-section)
- Free provision of blood
- Free transport from home to health institutions, between health institutions in case of referrals and drop back home
- Exemption from all kinds of user charges





## **Entitlements for Sick Newborn till 30 days after birth**

- Free and zero expense treatment
- Free drugs & consumables
- Free diagnostics
- Free provision of blood
- Free transport from home to health institutions, between health institutions in case of referrals and drop back to home
- Exemption from all kinds of user charges

# JSSY: Performance



| S.No | Services   | No. of beneficiaries<br>(Sept 12, 2011<br>– March 31,<br>2012) | No. of beneficiaries<br>(April 1 – July<br>15 2012) |
|------|--|--|---|
| 1    | Total Deliveries   | 430235   | 192210  |
| 2    | No. of pregnant women provided free medicine   | 753058   | 305844  |
| 3    | No. of pregnant women provided free lab tests  | 417319   | 186478  |
| 4    | No. of pregnant women availed free hot food  | 516437   | 197816  |
| 5    | No. of pregnant women provided free referral transport from house to health facility | 227716   | 142684  |
| 6    | No. of pregnant women provided free referral transport from health facility to house | 289978   | 153604  |
| 7    | No. of pregnant women provided free blood facility                                   | 18860  | 13086   |



# JSSY: Performance



| S.No | Services  | No. of beneficiaries<br>(Sept 12, 2011<br>– March 31,<br>2012) | No. of beneficiaries<br>(April 1 –<br>July 15<br>2012) |
|------|---|--|--|
| 1    | No. of Sick Neonates (30 days) received free medicine   | 132387   | 60777  |
| 2    | No. of Sick Neonates (30 days) received free lab tests  | 35399  | 18002  |
| 3    | No. of Sick Neonates (30 days) received free referral transport from house to health facility | 8434   | 2712   |
| 4    | No. of Sick Neonates (30 days) received free referral transport from health facility to house | 13850  | 5212   |
| 5    | No. of Sick Neonates (30 days) provided free blood facility                                   | 711  | 723  |

Source:-DM&HS



# Provision of Skilled Birth Attendance and Emergency Obstetric Care

**24 x 7 - 1100 PHC for providing basic emergency obstetric and new born care**

- Recruitment of GNM and ANM - All PHCs have 3 Staff nurses
- AYUSH Medical Officers
- Residential Facility
- Equipment and Lab Facility
- BEmOC Training

## Model Sub center

- Deliveries conducted in 3715 Sub-centres.
- Additional labor rooms constructed in 1911 sub-centres under Civil Works of NRHM.
- 8183 ANMs/Staff Nurses/LHVs/PHN/NT/AYUSH doctors & compounders trained under the SBA Training.
- 779 AYUSH personnel (557 MOs + 222 Nurses) trained for SBA.
- Additional ANM

## **Facility Mapping and Micro Planning**

Level-III -172 (34 DH+12SDH+6 Satl.Hosp+120 CHCs)

Level-II - 635 (227 CHCs + 408 PHCs)

Level-I – 2250 (1000 PHCs+ 1250 Sub centers)

## **Performance Based Incentives-**

- Incentive money for Surgeon team conducting more than 5 caesarian at FRUs
- For conducting 6 to 10 caesarian Rs. 10,000
- For conducting more than 10 caesarian, upto Rs., 20,000

## **RCH Camps-**

10,769 RCH Camps organized at remote PHCs of the districts on bi-monthly basis.

## **Maternal Death Review –**

1375 maternal death reported (982 in 2010-11 and 393 in 2011-12).

### **Causes of Maternal Deaths:-**

- 66% obstetric causes
- 26% medical
- 7% others
- 1% non maternal death causes



# Support to Maternal Health Services

- ASHA
  - In position
  - Trained
- Jan Mangal Couples
- Yashoda
- AWW
- Referral transport
  - 108
  - Community transport identified

# Other Schemes for Maternal Health Promotion



- Balika Sambal Scheme- Bond of Rs. 10000/- to maximum two girl child, if parents undergo sterilization. 1458 'Balikayen' have been benefitted.
- Family welfare award scheme for good performing district, Panchayat Samiti, Gram Panchayat, Govt. Hospital & Private Hospital/ NGO.

- **Rajeev Gandhi Population and Health Mission**
- **Jyoti Yojana-** Any woman who has undergone sterilization after one or two girl child only would be empowered
  - Set as Role model for village
  - Preference for ASHA selection, AWW, ANM selection
  - Preference in higher education
- **Pregnancy, Child Tracking and Health Services Management System Plus (PCTS +)**





# Some Innovations for Maternal Health In Rajasthan

- Kalewa
- Jan Mangal
- Balika Sambal
- Jyoti
- Recognition and incentives to Health facilities and PRIs
- Performance incentive for C-section at FRUs



# Capacity Building of Human Resource for Maternal Health Delivery

|          | Human Resource trained in 2011-12<br>(till Dec) |
|----------|---|
| NSSK     | 2140  |
| SBA      | 8346  |
| IMNCI    | 2418  |
| F-IMNCI  | 4   |
| BEmOC    | 188   |
| CEmOC    | 51  |
| LSAS     | 137   |
| MTP/ MVA | 255   |

Source: DM&HS



# Thank You

For more details log on to  
**[www.sihfwrajasthan.com](http://www.sihfwrajasthan.com)**

or

**contact : Director-SIHFV on**

**[sihfwraj@yahoo.co.in](mailto:sihfwraj@yahoo.co.in)**